

Atypical Meiosis

<http://www.tokyo-med.ac.jp/genet/mfi-e.htm>



Non-disjunction

- in some special circumstances, non-disjunction occurs
- the chromosomes fail to separate properly in meiosis
- one sex cell gets 24 and the other gets 22 chromosomes

Examples:

Downs Syndrome-Trisomy 21

Turner's Syndrome-X₀

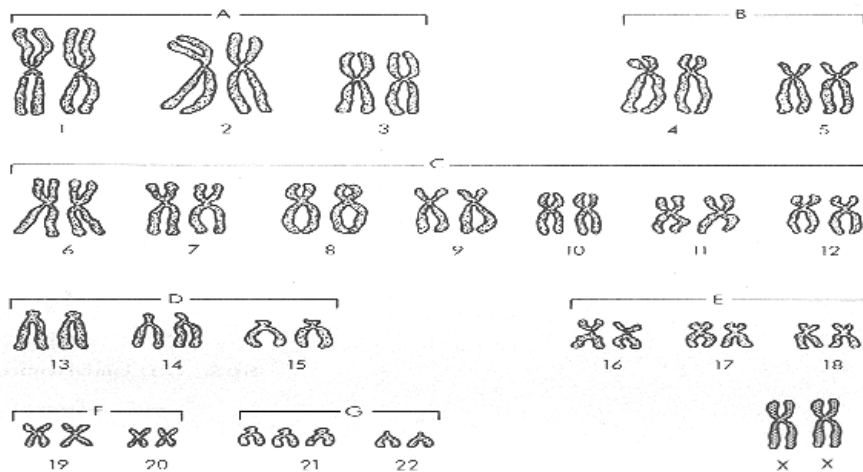
Klinefelter Syndrome-XXY

Edward's Syndrome-Trisomy 18

Patau syndrome-Trisomy 13

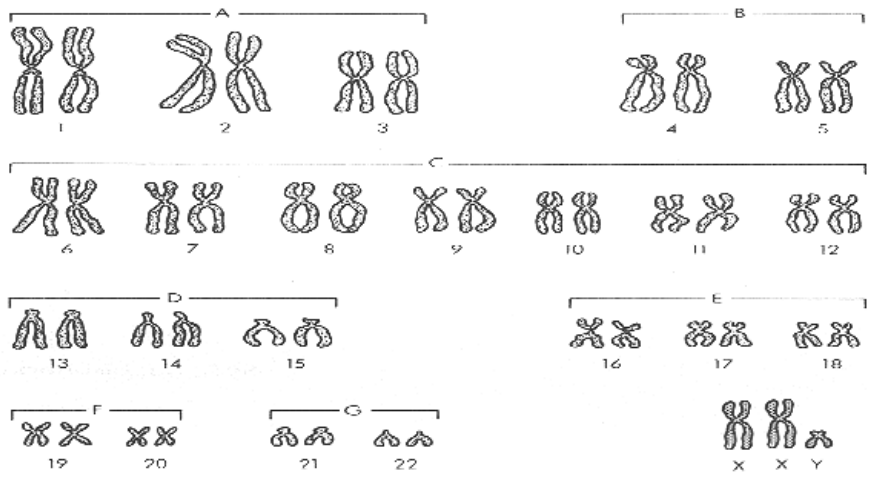
Karyotypes are photographic maps of human chromosomes and are used to determine specifically what disorder might be present

Sep 27 - 8:19 PM



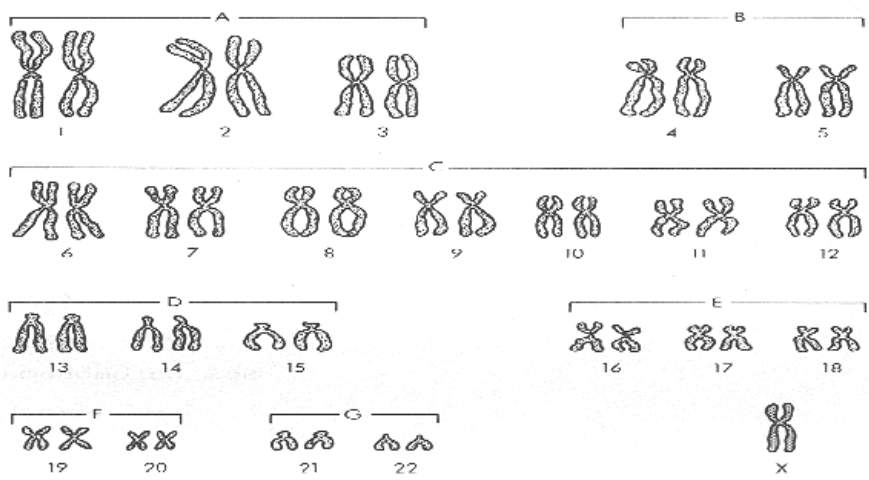
Down's Syndrome

Feb 6-9:39 AM



Klinefelter's Syndrome

Feb 6-9:39 AM



Turner's Syndrome

Feb 6-9:39 AM

Karyotyping Activity

Feb 6-9:41 AM