

Atypical Meiosis

<http://www.tokyo-med.ac.jp/genet/mfi-e.htm>



Non-disjunction

- in some special circumstances, non-disjunction occurs
- the chromosomes fail to separate properly in meiosis
- one sex cell gets 24 and the other gets 22 chromosomes

Examples:

Downs Syndrome-Trisomy 21

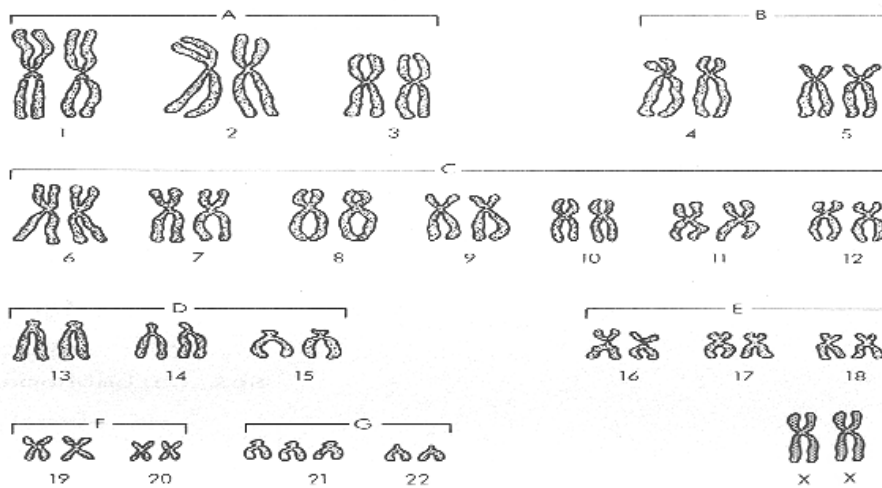
Turner's Syndrome-X₀

Klinefelter Syndrome-XXY

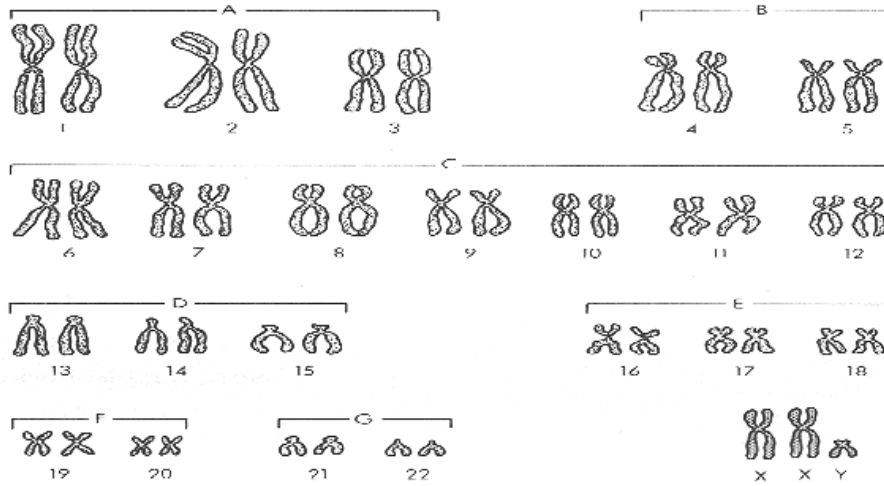
Edward's Syndrome-Trisomy 18

Patau syndrome-Trisomy 13

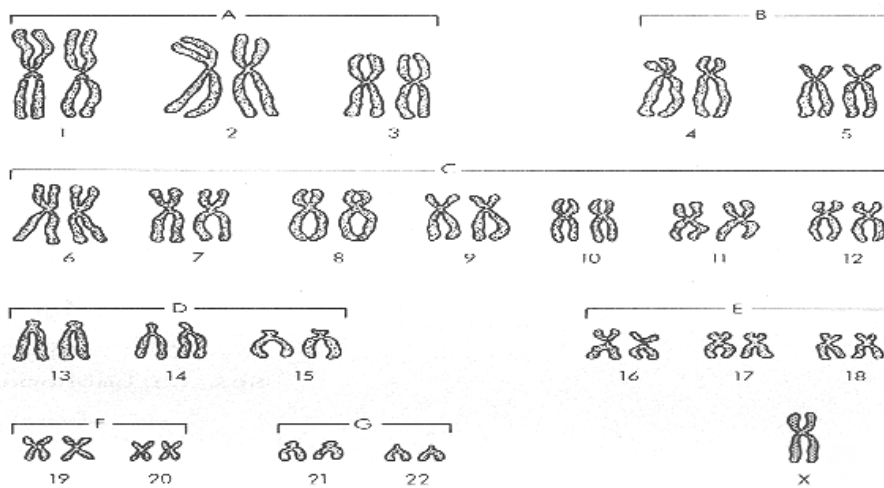
Karyotypes are photographic maps of human chromosomes and are used to determine specifically what disorder might be present



Down's Syndrome



Klinefelter's Syndrome



Turner's Syndrome