

Science 9-Stages of Mitosis

Interphase

- a resting stage
- genetic material duplicated

Prophase

- chromosomes shorten and thicken
- nuclear membrane dissolves

Metaphase

- chromosomes line up along equator of the cell

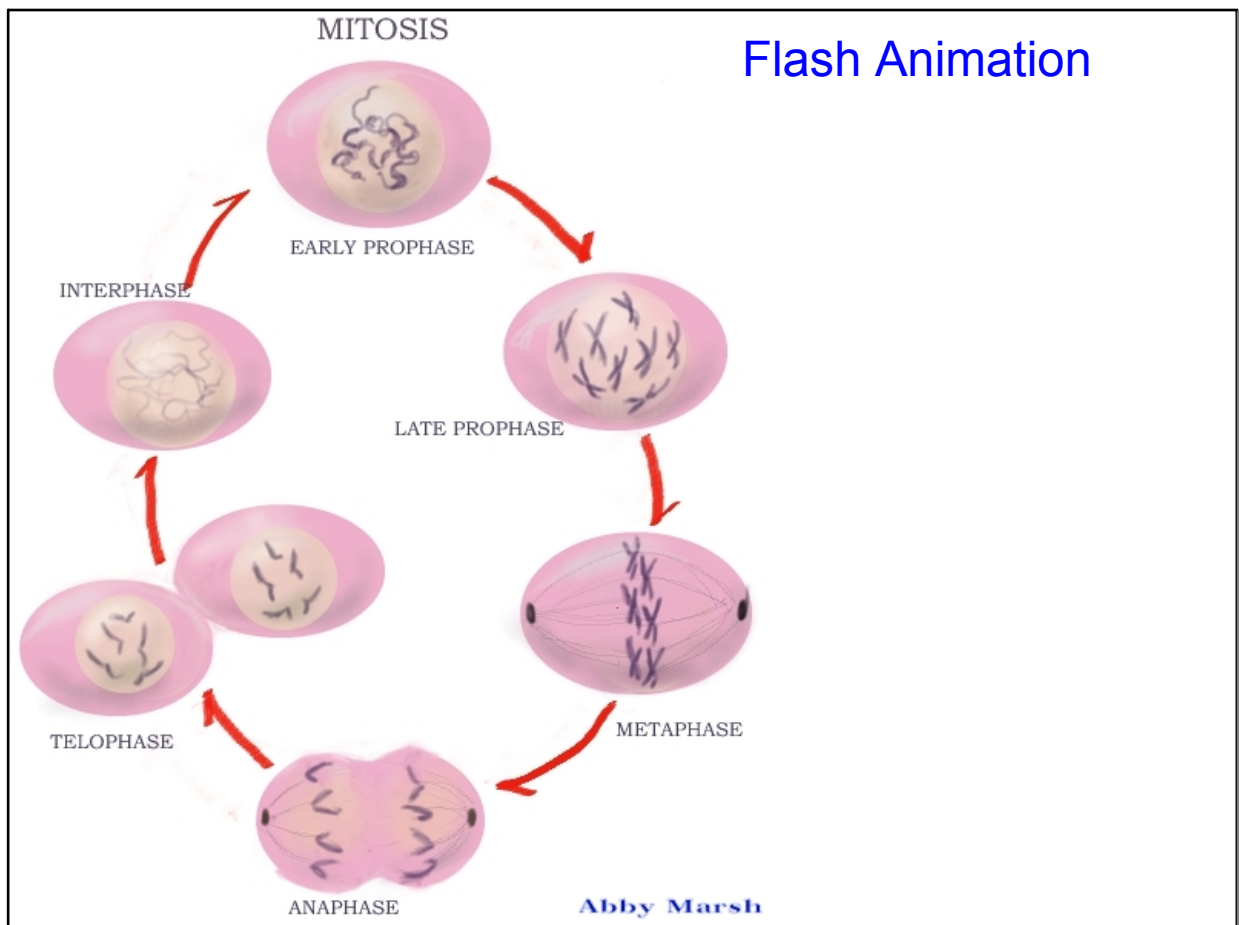
Anaphase

- Chromosome splits and each one begins to move to opposite sides of the cell

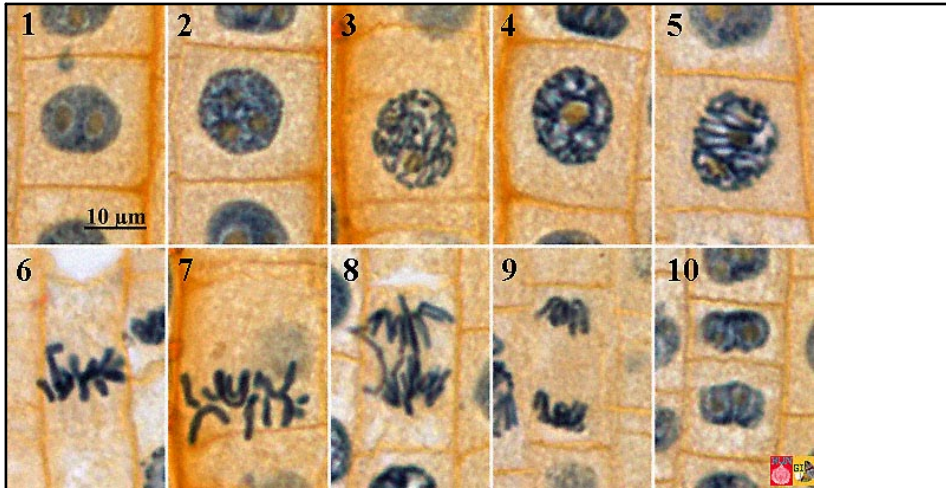
Telophase

- chromosome copies move to opposite poles
- nuclear membrane redevelops

Sep 13 - 8:12 PM



Sep 13 - 8:23 PM



View Prepared slides Onion root tip and whitefish mitosis

Sep 13 - 8:28 PM