

THE CHALLENGE:



Spring is a time for new growth and warmer temperatures. Scientists also see this as a time to study climate change through the melting of icebergs. Icebergs are large pieces of floating ice in the sea which have broken off from larger ice structures such as glaciers or ice shelves. They are common in the Spring when ice begins to melt.

Your challenge is to conduct an investigation to determine the fastest way to melt ice cubes without adding heat. Be sure to only change one thing and control your variables!

~ STEAM TEAM

Create, Test, Improve

Learning Activities

Language Arts/Social Studies:

Are you familiar with the Titanic? It was a British passenger liner operated by the White Star Line that sank in the North Atlantic Ocean in the early morning hours of April 15th 1912, after striking an iceberg. Click [here](#) to learn more.

Create a comic strip or stop motion to describe how it would look if you were face to face with an iceberg.



You can create your own comic strip or click [here](#) for a template:

Numeracy:

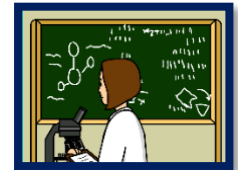
And that's just the tip of the iceberg! Over 90% of an iceberg's mass and volume is underwater.

Measure and pour 250mL of water into a clear bowl or cup. Mark the water level with tape or a dry erase marker. Place 3 ice cubes in the container and mark the new height of the water.



Can you figure out the volume of water that gets displaced? Predict how the water level will change after the cubes melt. Write your prediction, results in your journal. Anything surprise you?

Science:



To conduct an investigation, you need a plan! From the challenge, do some research and write a testable question you are trying to answer. Then, write your hypothesis, plan, observations, results and conclusion in your journal. Remember to only change one thing and control your variables. Check out some pointers [here!](#)

The Arts:

Wouldn't it be cool to grow some edible icebergs? Try making your own rock candy out of water and sugar. Follow the steps found [here](#). It'll take about a week, but it will be worth the wait!



Word Scramble

rialcge
lapro rbae
noaec
emtlcai ghnaec

